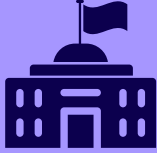



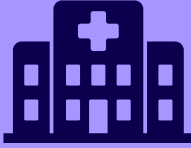



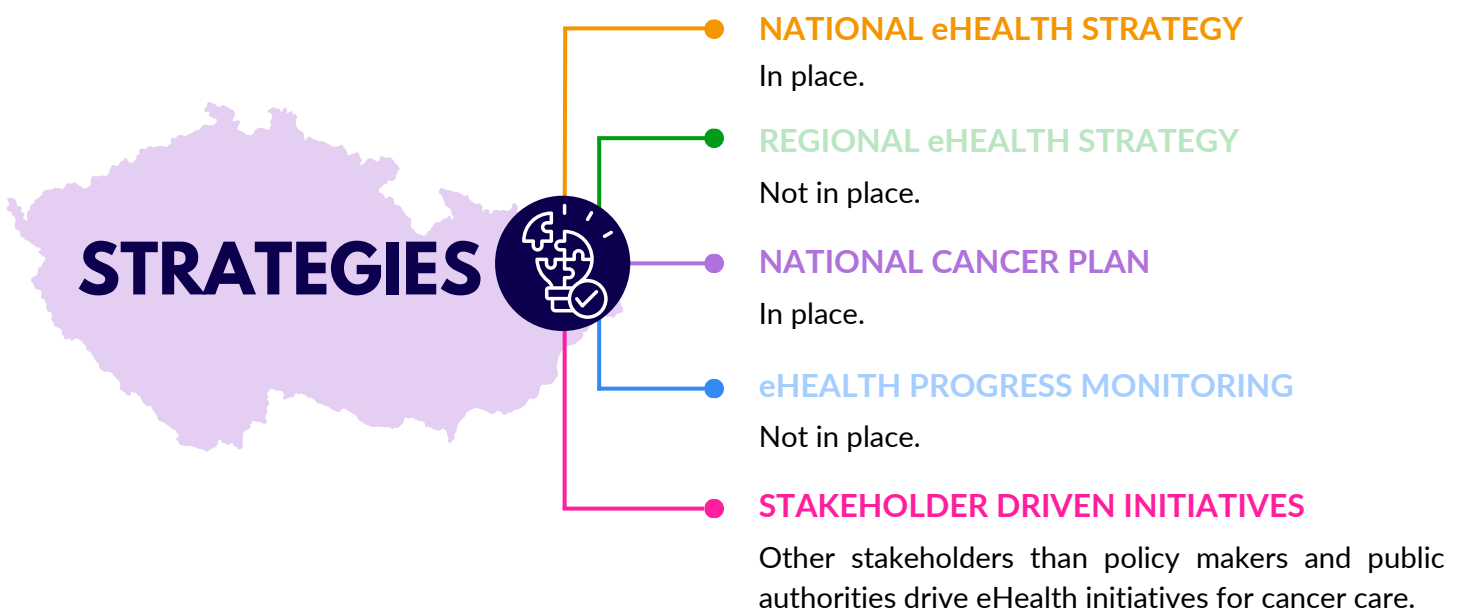
## GOVERNANCE

eHealth programmes require political-governance strategies to achieve health policy goals. This is an overview of the eHealth governance ecosystem in the Czech Republic:

ENTITY RESPONSIBLE FOR eHEALTH	NATIONAL eHEALTH GOVERNANCE BOARD	PUBLIC eHEALTH AGENCY
 Ministry of Health	 National Board for Electronic Health	 National eHealth center of the Ministry of Health
eHEALTH TOOLS IN THE OUTPATIENT SECTOR	eHEALTH TOOLS IN THE INPATIENT SECTOR	COMPREHENSIVE CANCER CENTRES WORKING ON eHEALTH
 Partially covered by public resources	 Partially covered by public resources	 In place (teleconsultations used in certain cases)

## STRATEGIES

The Czech Republic has put in place specific strategies and policies for eHealth and cancer care:



## LEGISLATION

The level of integration of eHealth in different countries also depends on how legislation responds to innovation needs. In the Czech Republic, telemedicine, cancer prevention and eHealth cancer care is regulated by:



Note that where no specific legislation is in place, commonly, general legislation is applied. For cancer prevention, the general legislation on preventive examinations includes oncology.

## CANCER SPECIFIC eHEALTH SOLUTIONS

A number of digital solutions are available in some countries for cancer patients. Some of them are commercial, whereas some others are offered and recommended by national public healthcare systems. In some countries, governmental institutions provide a list of solutions, such as eHealth apps, for cancer patients. In the Czech Republic:

### RECOMMENDATIONS

No information available on websites or other resources that are recommended to the public.

### CERTIFICATIONS

No information available on certifications or quality approval processes to assess digital tools reliability.



**For more information visit:** [ecanja.eu](http://ecanja.eu) or the [Czech Republic original data survey](#).

*Disclaimer: Data obtained from public sources. Data reviewed by country expert(s). Last updated: 18/06/2024*